

Vol. 11 No. 10, (October, 1958)

Date : 4/27/25 12:54 AM

<https://nla.gov.au:443/nla.obj-304079569>

Copyright varies by issue and article

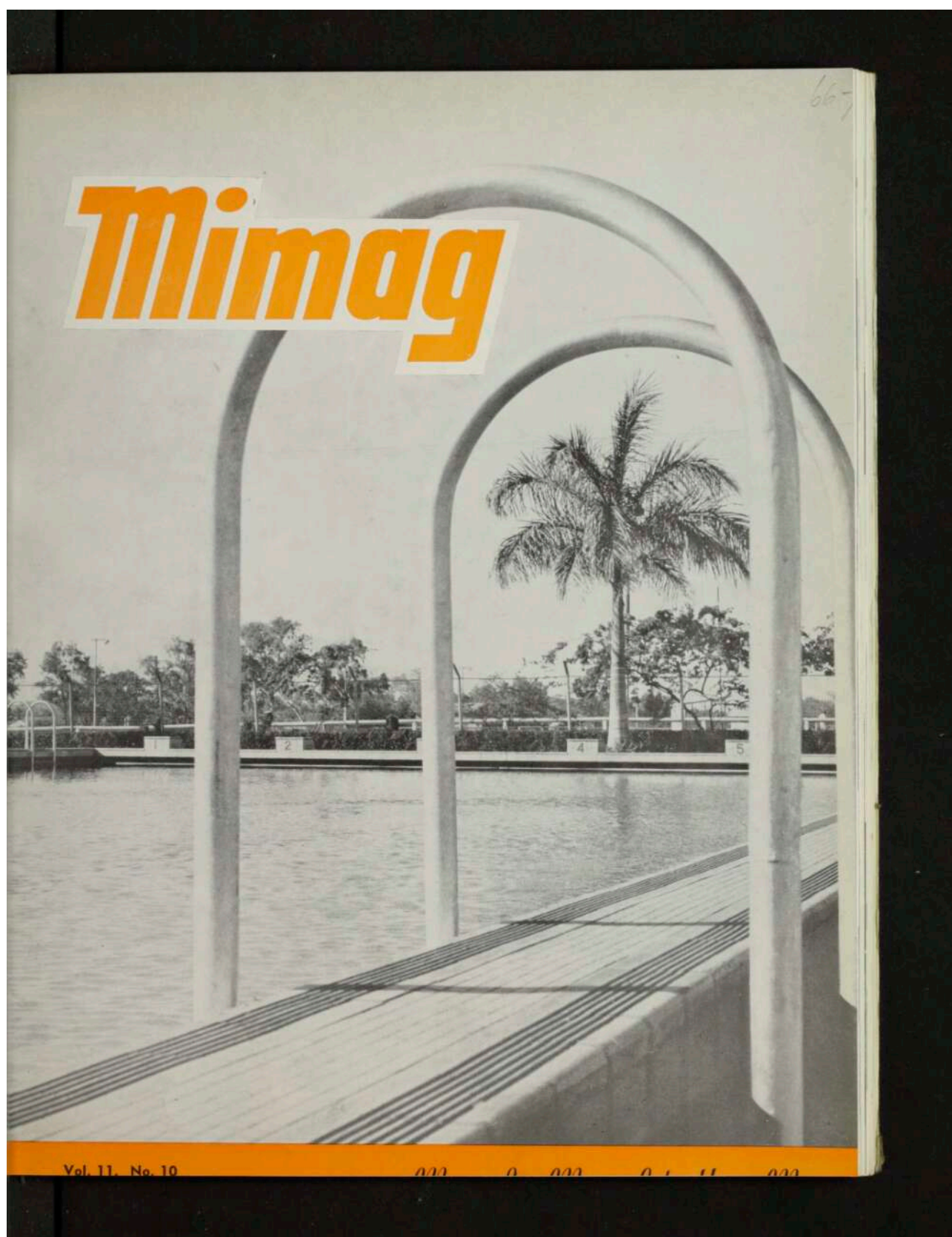
Reason for copyright status: Serials have an open range of dates.

Copyright status was determined using the following information:

Material type: Literary, dramatic or musical work

Copyright status may not be correct if data in the record is incomplete or inaccurate. For more information regarding Copyright in Library Collections visit <http://copyright.org.au> and <http://www.nla.gov.au/copyright-in-library-collections>

The National Library of Australia supports creativity, innovation and knowledge-exchange but does not endorse any inappropriate or derogatory use. Please respect indigenous cultural and ethical concerns.



Mimag

Contents of this magazine may be reproduced free of charge providing credit is given to Mimag. Additional material will also be supplied on application to the Editor of Mimag, Mount Isa Mines Limited, Queensland.

MOUNT ISA MINES LTD. HOUSE MAGAZINE

Contents

Britannia Journey - - - - -	Page 4
Scientist in Entertainment - - - -	Page 7
Stope Filling - - - - -	Page 10
Church of England Show - - - - -	Page 12
Visiting Personalities - - - - -	Page 15
A Night in Paris - - - - -	Page 16
Men of Isa - - - - -	Page 18
Safety Glasses Paid Here - - - -	Page 23

Front Cover

The opening of the Memorial Swimming Pool at Mount Isa after the winter recess prompted this picture which indicates the hidden wealth of scenery to be found even in the most ordinary of things—a palm tree framed in the handrail extensions of one of the pool ladders. The Memorial Swimming Pool was erected by Mount Isa Mines Limited for the citizens of the town at a cost of £60,000, and officially opened 7 years ago.

Back Cover

This picture is typical of the Australian Outback. Our photographer accompanied the Mount Isa Silver Band to the Cloncurry Merry Muster and captured this airborne horse and rider competing in the Roughriding Championship of Queensland. Next year the Cloncurry organisers are expecting to be awarded the Australian Championships and hope to be included in the itinerary of the Royal Visit for the occasion.

Panel Opposite

The steam drum for the first high pressure boiler at the Mica Creek Power Station arriving at Mount Isa last month. Next the heavy unit, transported on a 43 foot long 18-wheel trailer, passes the General Office building. On arrival at Mica Creek the drum is raised from the trailer and hoisted into position on the steelwork at a height of 102 feet.

PRINTED BY "TRUTH" AND "SPORTSMAN" LTD., VALLEY, BRISBANE

Editor

R. P. Furniss

Photography

J. F. Fokker

Art

B. B. Harvey

Credits

Mining

Ken Finlay

Engineering

George Harverson

Mill

Ern Martin

Geology

Bill Murray

Copper Smelter

Ian Johnson

Lead Smelter

Frank Fuller

Administration

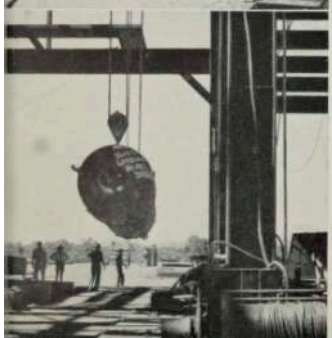
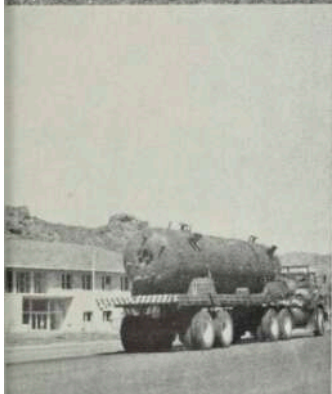
Lillian Rosevear

Warehouse

Daryl Lister

Sport

Bob Holt



A Message from the Chairman

The recent visit to Mount Isa of Mr. Clifford Randall, World President of Rotary International, brings to mind the ideal of Rotary and its application in our community.

Rotary exists to encourage and foster the ideal of service as a basis of worthy enterprise. In serving the communities of the world it promotes the advancement of international understanding, goodwill and peace.

Our Company in its own way endeavours to serve this community which has grown about it.

This service is evidenced in provision of amenities such as our medical facilities, our community halls, our many sportsfields and swimming pool, the library and physiotherapy centre; and in the assistance that has been given towards the construction of the new hospital, new churches, new roads, sewerage, water supply and electrical installations and school improvements.

School and University Scholarships are provided for those who show they can make the most use of the opportunity. Incentives are provided for all who wish to proceed with professional and trade examinations.

In enabling people of 39 different nationalities to live and work together in harmony we are making our particular contribution towards international goodwill.

It is appropriate that Mount Isa should have its own Rotary Club. It is doubtful if the Rotary ideal has been more diligently fostered in any Queensland town throughout the years.

GM Fisher

Mimag, October, 1958



Scene inside the London Metal Exchange where much of M.I.M.'s lead bullion is bought and sold. Brokers are seated in the ring while their clerks note verbal transactions made between buyers and sellers. Mount Isa's lead bonus is based on the price of lead sold on this market.



Lead bullion bars from Mount Isa awaiting shipment to Britannia Lead Co. on the wharf at Townsville.

Ron Green writing from London tells the other side of the Mount Isa story in describing this . . .

BRITANNIA JOURNEY

THE "TEMLAR" slid quietly into her Thames berth in a flurry of snow. On board she carried a cargo of lead bullion slabs, a cargo that five months before had been a vein of rich dark ore deep under the red mountains of Mount Isa.

Almost as soon as the freighter had tied up at the Albert Docks a brood of lighters pulled in beside her. They were ready to off-load the slabs into their long, open holds and carry the 2000 tons of lead bullion under tug power down river to Northfleet.

Twenty-two miles from London and across river from the big-ship docks of Tilbury, Northfleet is the location of Britannia Lead Company. Here was the end of the journey for Mount Isa's total lead bullion output.

"The end of one and the beginning of another journey," Britannia's plant superintendent, Frank Fletcher, commented as we watched the lighters un-

loading. "Once we have extracted the silver and antimony much of the refined and antimonial leads will end up at British cable makers or battery manufacturers. As for the silver, that will be sold through the Bullion market."

Quietly-spoken Frank Fletcher has been on the job with Britannia since 1931. He is the right-hand man to plant manager, Mr. H. J. Watty. Under their close co-operation the three-stage refining processes at Northfleet are carried out.

Mr. Watty explained: "The set-up here is to have all kettles, furnaces and refining gear under one straight line crane track in a building measuring 330 x 60 feet. There is a separate building for the baghouse."

An ex-marine engineer, once on the England-Australia run with the P. & O. fleet, grey-haired and amiable Manager Watty has been with Britannia

Lead since its inception.

"My first job was to supervise the building of the plant in 1931," he said. "I've been at the helm since 1941 and most of the original staff men are still here. We also have our veterans in the plant—thirteen in all. That's why we launched our 25 Year Club last year. We now celebrate with a special dinner at Gravesend each spring."

Altogether 170 employees are on the payroll in the eight-acre plant. Seven girls are included and are attached to the red brick administration block. They work as typists, telephonists or clerks.

Work routines at Northfleet were much like Mount Isa's with one glaring difference. Offices were heated; outside them were swirling spring snowfalls. Workday started at 8.30 a.m. It finished at 4.30 p.m. And there was Saturday morning work for the office staff. Morning and afternoon tea breaks were a tradi-

tion. Here tea and coffee were served in the basement canteen. Ten minutes was the normal break.

The area around Britannia is a busy industrial zone. Blue Circle Cement has two factories and Bewaters paper mills are close by. Across the Thames at this point thousands of Australians come and go each year in the big P. & O. and Orient liners that dock at Tilbury. On the west side of the plant lies a wide stretch of marshland.

"We have bought sixteen adjoining acres of the marsh," Mr. Watty commented. "The idea is to tie in with Mount Isa's current expansion programme. We'll dump our slag there and reclaim it. But our priority job is to extend our wharf along the new frontage. The contractors will begin work on the project shortly."

As we talked, stacks of 90 lb. ingots of pig lead were being loaded into the same barges that had brought in the Mount Isa lead bullion.

"They are going up river to a buyer in the south," Mr. Watty added. "But selling the lead stocks isn't our business. This is handled by Metal Traders Limited in conjunction with London Office, who also handle the shipping and insurance arrangements."

All the strings were tied in London. The men who helped tie them were the metal brokers, insurance agents, shipping brokers and silver brokers.

This side of the Britannia story—the London Office side—was tied up with the whims of the Baltic Exchange, the Metal and Silver Exchanges and the brokers who acted for Britannia Lead. It also involved liaison between Britannia and Mount Isa Mines.

Behind the scenes was a world of morning dress, the snuff box and the courteous manoeuvring for the upper hand. It was an honourable world where a man's word was his bond. When a verbal agreement was made between brokers for their clients it was

honoured to the letter. Tradition hung closely about these people and their activities. This was natural enough. These London exchanges had been the focal point of world trade for at least three hundred years. Lloyds of London and the Baltic Exchange had been founded in the coffee houses of the City long before the days of bars and beer shops. In Lloyds to this day the Seventeenth Century type of coffee table and bench are still used by underwriters and their clients.

Speaking of the sale of plant products, secretary of Britannia, Mr. Jim Burley, said that the total silver output (last year more than four million ounces were extracted from Mount Isa's lead bullion) was sold through Samuel Montagu & Co. Ltd.

"As silver brokers and bankers," he said, "Montagu's take delivery from Britannia and store the bullion in their own London vaults. They resell on the London Bullion Market on our instructions given after consideration of their advice on the market prospects."

With the Company's silver dealer—Mr. K. A. Standiloft—we visited the brick and concrete vaults where the silver is stored. Besides the bullion we saw bars of Russian gold and hundreds of bags of silver Saudi Arabian coins.

"These coins have been sold to us by dealers in Aden," Mr. Standiloft confided. "Originally they were minted in Britain or Mexico and have a high silver content. We intend to melt them down, extract the silver and sell it to buyers in this market."

Mr. Standiloft pointed out that none of the silver would find its way into British coinage. "The Royal Mint discontinued using silver in English coins in 1946," he said. "Copper/nickel has taken its place as you can tell by the dull clink and appearance of present coinage."

From the treasure chests of Samuel Montagu we walked up aged, narrow alleyways to the mecca of the world's metal buyers — Metal Exchange.



A staff conference in progress at Britannia Lead's Northfleet plant. It is presided over by Mr. H. J. Watty, centre. Mount Isa's total lead bullion output is refined by this company.



Metallurgist Ken Barrett, left, and Plant Superintendent Frank Fletcher examine the Mount Isa bullion chart in Northfleet office of Britannia Lead Company.

Twenty-five-year man Fred Johnson, a fitter and welder, at work in the plant at Northfleet.





Marble columns dominate the floor of the Baltic Exchange in London. Here cargoes of Mount Isa lead and zinc concentrates are consigned to ships of various flags for the Townsville to London journey.

Here in a circular, red leather bull-ring we saw and heard what happens to the lead and zinc that had once felt the drills, gelignite and smelter heat of Mount Isa. A score of conservatively dressed business men sat in the circle. Britannia's representative — a Metal Traders Limited man — was seated among them. His clerk stood with us behind the broker.

"At five-minute intervals," he explained, "tin, copper, lead and zinc are alternatively dealt with by the brokers in the ring. The price of the day finds its level by the pressure of supply and demand."

Each metal was dealt with twice and then the Exchange recessed till the afternoon session. Again each metal would be marketed with two five-minute sessions. At the close of the morning session lead had remained steady at £74/17/6 (buyer) and £75/2/6 (seller).

The main bulk of the 47,000 tons of Lead processed by Britannia last year, was sold by Metal Traders to the manufac-

turers of Lead cable, sheet, pipe, battery plates and alloys. "We prefer to sell directly to the customers and keep in close touch with them," Metal Traders commented. "Only as a last resort do we sell on the Metal Exchange, generally at a time when the manufacturers are out of the market for a while. In this way the Metal Exchange always provides a market for us to sell on, even when the actual consumers of Lead are not buying."

From metal sales we passed to another facet of Britannia's business—the shipping angle.

"The Baltic Exchange comes into the picture now," Secretary Burley added. "That's the place where shippers and ship owners come to terms. It is the point where cargoes of Mount Isa lead and zinc concentrates are consigned to ships of any flag. Our brokers, Trinder Anderson Limited, are the people who do the job for us."

Senior partner in the firm, Mr. Charles Trinder, gave us details of the Baltic set-up. "Brokers in the various world

markets," he said, "look for ships, or alternatively cargoes, to match each other, and we look particularly for vessels normally on the Australian trade routes that are suitable for the carriage of Mount Isa products."

"The shipments of Lead are made under annual contracts which we negotiate with a number of shipping companies at freight rates comparable with those of the charter market. This is necessary because the normal type of Lead from Mount Isa is insufficiently large to make chartering of full cargoes in freighters a workable proposition. It is therefore necessary to arrange shipments in vessels that can find a completion cargo in Australia." (Such a vessel was the "DONEGAL" which was shortly to load Lead from Townsville.)

Mr. Trinder explained that a full cargo of say 8,000 or 9,000 tons of Concentrates would be chartered on the Floor of the Exchange and that Britannia would probably have a choice of several vessels before he could obtain a vessel at the lowest price on that particular day. These vessels would be fixed on a charter party in accordance with the very strict rules of the Exchange. All were standing in quiet groups. There were no obvious signs that business deals were being finalised. In reality the movement of millions of pounds in freight and the courses of hundreds of ships were being affected as we talked. Among them would be the "TEMPLAR", now standing empty at her London Dock berth. When she did weigh anchor again it would be the result of a verbal agreement made within these marble walls. The chances were, too, that if she sailed south to Australia it would be a Mount Isa cargo that would fill her holds on the next voyage home.

BEFORE the rhythmical movements of artistic hands and the pleasant soothing, but forcefully insistent voice, sedate girls we knew became alluring exponents of the hula-hula or elevating interpreters of the Highland fling, while the not-so-sedate performed the can-can with gusto.

Lady wrestlers were created at the clicking of fingers, and the big bronze miners and dons of our sportsfields were reduced alternately to jelly-knees, then to stone-like immobile rigidity.

Newly-made musical celebrities bowed persistently in the spotlights and energetic prize-fighters terrorised the stage with flailing fists.

We laughed until laughter tended to overcome us and then applauded the greatest master of the science of hypnotism—and incidentally the youngest top-line entertainer—in Aus-

The growing metropolitan character of Mt. Isa is emphasised by the visits of top-line artists such as . . .

tralia to-day. His name is Reveen.

Reveen is a showman extraordinary. His Memory Test, in which he memorises 30 remotely diverse articles thrown at him in any order, we had seen before, but never performed with such amazing speed.

Nor was Reveen afraid of complications—or an overdose of detail.

Someone called out "No. 17 . . . a Volkswagen."

"Yes", said Reveen. "What colour?"

"Blue and green!"

"What year?"

"1955."

"What kind of tyres?"

"Dunlop—whitewalled."

"Good, and what registration number?"

"NKF 514."

Reveen went on memorising Nos. 23, 19, 2 in whatever order they came—a strawberry ice-cream, a yellow yo-yo, a didjeridoo or the name of a popular



REVEEN — SCIENTIST IN ENTERTAINMENT

racehorse. Those who tried to confuse or confound him only found themselves confounded.

Next the young entertainer followed with a unique presentation of mental telepathy and extra sensory perception.

A committee of six from the audience was brought to the stage. Each was a familiar Mount Isan; there was no deception here. Blindfolded and with pennies taped to his eyes Reveen identified for each of these various objects which they produced. In one case he identified a lottery ticket including its number. In another he described with extraordinary accuracy a metal badge representing a New South Wales Swimming Club.

Under the same thorough blindfold he now made his way around the aisles of the hall, defying efforts to halt or obstruct him by placing stationary articles, limbs, and in some cases whole bodies in his path. This unique exhibition of extra sen-

sory perception was the most amazing feat Mount Isa had ever seen.

During the following two hours of hypnotism and unbridled mirth we met such celebrities as Marilyn Monroe, Errol Flynn and Robert Gordon Menzies (complete with hecklers) portrayed with realism by local characters who had never graced a stage before and were unlikely to again unless called upon by the lure of Reveen's hypnotism and its relaxing after-effects.

Significant about his week's sojourn in Mount Isa is the fact that of those who attended on the early nights, it was observed, that about 60 per cent. returned a second time, and a considerable number of people paid three or more visits. The programme varied nightly and was never monotonous.

Another excellent entertainer in Reveen's company was versatile musician, Ted Muller. Ted produced high quality music and



a great variety of realistic sound effects on his electric clavoline.

Backstage after the show "Mimag" interviewed Reveen and his pretty wife, Coral.

Born in Adelaide, South Australia, Peter James Reveen will be playing at the Capitol Theatre, Perth, on the occasion of his 23rd birthday this month.

He first became interested in the science of hypnosis at the age of 12 when he picked up and began to study articles on the subject in an American Medical Journal.

He began with school parties and graduated to amateur concert parties. His first professional engagements were in Sydney night-clubs. However, real-

Reveen demonstrates his "extra sensory perception" at the Memorial Hall, Mount Isa. Blindfolded he walked confidently through the hall evading obstacles.

The young lady above was hypnotised by Reveen from a radio station more than a mile away. This demonstration of hypnotism by radio was given in New South Wales last year.

ising that experience is the greatest asset in the entertainment business, Reveen next choose the difficult but best school for experience—the show-ground.

At 19 he was managing his own side-show under the direction of well-known showman, Bob Parker.

In those days, Reveen recalled, he would repeat his memory training act 30 times daily before the most difficult audience in the world. And although he lays no claim to it, many who have seen him and his contemporaries perform, including local recognised authority, Eric Blount, are of the opinion that

he is the world's fastest.

At 20 he commenced preparations for his own full night performances and spent many months in laborious study and research to achieve originality. He copies no one.

His first venture was in the Melbourne suburbs where he filled many of the suburban Town Halls. During this period while he developed a programme of top-class entertainment, he experimented courageously with new ideas. Enthusiastic audiences applauded.

Directing his own publicity campaign, Reveen now chose the Gippsland area of Victoria for his first tour.

He created an all-time attend-

Reveen, in the process of his memory training demonstration, recalls the items listed on the board, first in numerical order and then in reverse.



ance record in Gipsland playing 11 weeks to full houses.

The following year Reveen began his tour of New South Wales. He played in almost every town of any size and invariably created attendance records wherever he played.

In Lismore, for instance, with a population of 20,000 he played 23 consecutive nights to full houses and gave two charity shows which were also packed to capacity.

Since the beginning of his Queensland tour this year Reveen has been breaking all previous attendance records along the coast. After 10 highly successful nights in Rockhampton he returned for a further 6 nights in response to popular request, but this was all his tightly scheduled programme for the current year would permit. At Townsville he played for 13 successive nights to capacity houses and gave a charity concert for the crippled children.

After the free therapeutic treatment which he gives at the end of every show, he suggests to those who feel they have derived benefit from it and wish to express gratitude in a practical way, to remember such charities as the spastic and crippled children.

He attributes his meteoric success to his formula of presenting hypnosis for what it is, an intelligent science, scoffing at all bally-hoo build-up and maintaining clean, fast presentation with a maximum of instructional value.

A family man, Reveen, is married to 21-year-old Coral Elder, the girl who encouraged him from the beginning, stuck by him when the going was toughest and urged him on to always greater heights afterwards. They have a six-month-old son, Wayne Peter, who was born on the day internationally renowned showman Mike Todd tragically lost his life.

To Reveen this had a personal significance. He has always been influenced by the wonderful philosophy of life expounded by Todd, which he feels all too

few people understand. "I have been broke many times, but I have never been poor. Being poor is only a state of mind—being broke only a temporary situation."

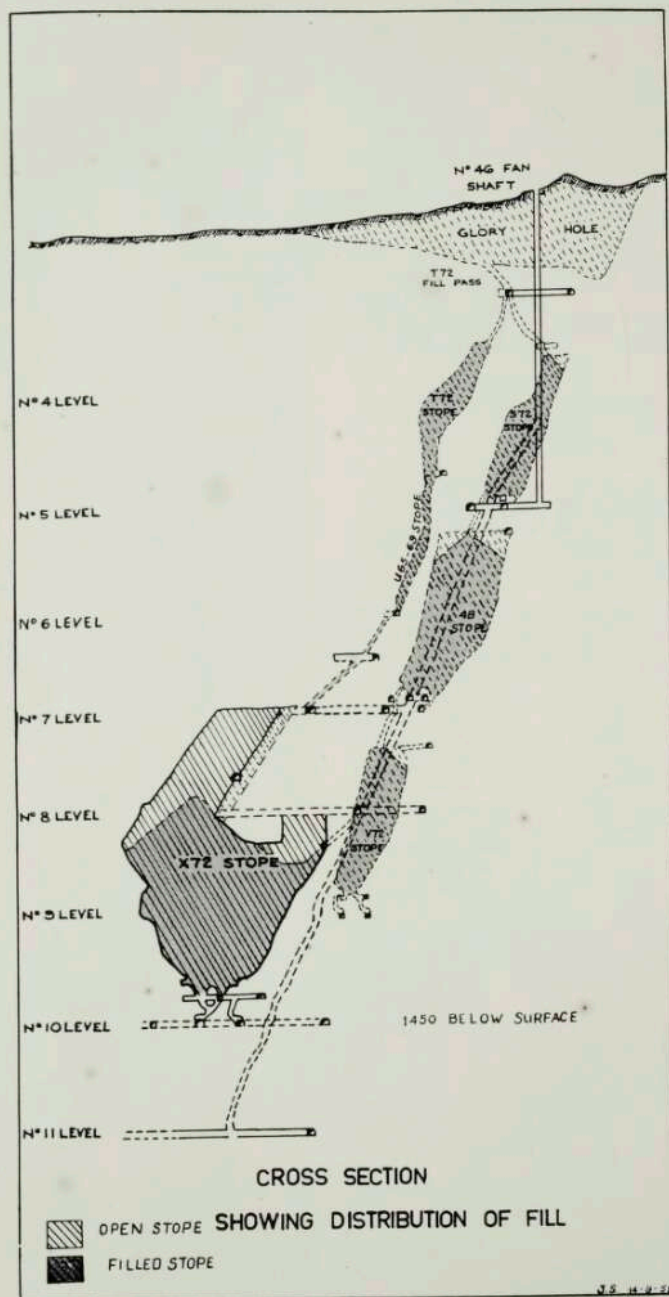
Eric Blount, well-known Mount Isa authority on hypnotism, telepathy and mind training, had this to say about Reveen: "Having been steeped in what is generally referred to as stage hypnosis from a very early age—my father was an exponent of the art for many years—I have always kept in touch with this profession, particularly from the hypnotherapy angle and I can say I have never seen a better performance in hypnosis, telepathy and memory training than that exhibited by Reveen."

Reveen has gone from Mount Isa. He has left behind from his many enthusiastic audiences a representative number of grateful people enjoying relief from migraine headaches, nervous mannerisms, lack of self-confidence and addiction to smoking. But, even those who knew only the hours of laughter and spectacular entertainment which he provided will look forward with more than a little eagerness to his return in the future.

But his visit here has another significance as far as Mount Isa is concerned. His was the visit of a top-line entertainer. And a week later he was followed by another top-line entertainer—Patrick O'Hagan. Such visits as these indicate the growing metropolitan character of Mount Isa and the general realisation of this in varied fields throughout Australia.

Top: The blindfold is no obstacle to Reveen. He identifies a pair of spectacles for Miss Pat O'Keefe. Next, Dawn Irwin under hypnosis does a "rock 'n roll" around the hall. Commented Dawn afterwards: "It's a funny feeling being hypnotised. You know, I wouldn't mind being hypnotised for the rest of my life!" Third picture: John O'Sullivan found himself a prominent position to take a bow after conducting a symphony orchestra. Bottom: Reveen at leisure points out a Mount Isa landmark to his wife, Coral. The young hypnotist provided Mount Isans with the most entertaining show in years.





13,000 tons per day in

Stope Filling

After ore is mined from underground workings chambers are left which are filled either contemporaneously or subsequently with waste rock or mill tailings. This filling provides temporary support for mining operations or on a larger scale, prevents collapse of the underground workings with consequent subsidence on the surface.

Vast cavities are to be seen underground before filling commences. One of Mount Isa Mines' biggest open stopes was in the copper ore bodies—X69-72 stope above 10 Level. Before filling commenced it was approximately 500 feet long, 550 feet high, with a maximum width of 300 feet. A better mental picture of this may be achieved by comparing the height of the Copper Smelter Stack which is 329 feet high.

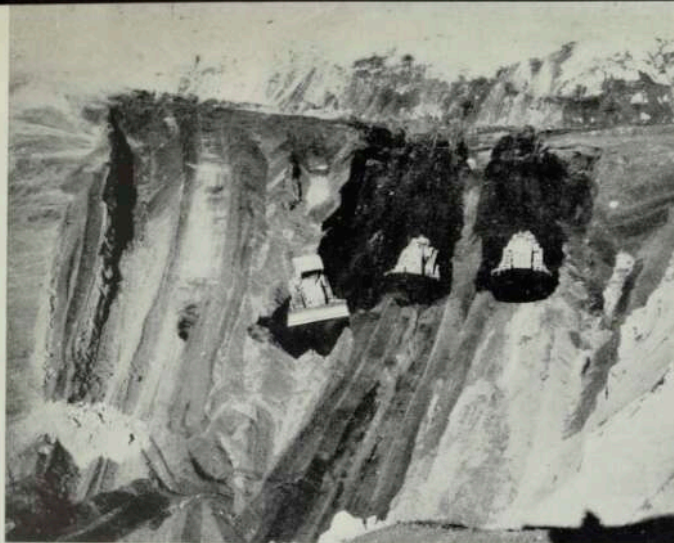
At one time Mount Lyell copper mine in Tasmania was famous for the size of its open stopes. At least one stope was much larger in area than an average football oval.

The filling of some old worked-out stopes at Mount Isa Mines has been carried out over the last 12 years, but never before to the same extent as at the present time. Last year 261,000 tons were placed underground and the fill stockpile increased to a total of 500,000 tons. Wet and dry fill are both used in the mine. Wet fill gives much better support, but is more difficult to place in position.

For use as wet fill the mill tailings are taken as they are

Mimag, October, 1958

10



Bulldozers in the old Glory Hole working in unison on the moving of stockpile fill.

pipled from the Davidson Shaft along 8 Level or along No. 3 Sub Level to a bore hole, both of which connect with the stope. The filling of X69-72 stope started on June 13 this year after a very intensive programme of building the high pressure fill bulkheads needed to confine the fill. These bulkheads were constructed on the 10 Level Grizzlies and on all openings into the stope. The present rate of filling is approaching 13,000 tons per day.

In addition, other stopes throughout the mine are being filled with the waste rock from level development and the mud from Pump Station Settling Sumps underground is tipped into these stopes to help fill up the space between the rocks.

Stope filling, slow and costly as it sometimes is, enables us to mine safely and maintain our position as Australia's largest underground ore producer.

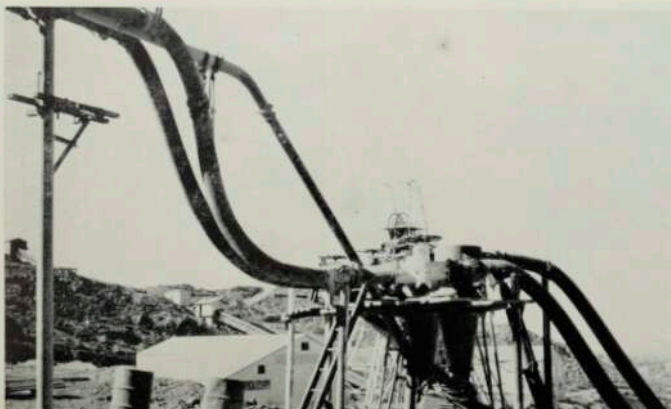
pumped from the mill and passed through Cyclone Separators. After passing through two Cyclones the coarsest one-third of the tailings is piped down the Davidson Shaft from where it is distributed to the required stope. The remainder of the tailings is pumped to the Tailings Dams to the west of our underground workings. Many hundreds of feet of rubber lined pipe are needed to carry the fill as ordinary steel piping quickly wears out under the action of the abrasive sand particles.

Waste rock filling, some of it

overburden from the Black Rock copper open cut, is bulldozed into T72 fill pass where it passes down through the old workings of the No. 1 ore body. These workings have been connected by a short pass to the top of X69-72 stope just above 7 Level. In addition to this waste rock, slag is hauled from the Copper Smelter by road and dumped directly into 46 Fan Shaft from whence it falls or is distributed to the stope being filled.

At the present time X69-72 stope is being filled as rapidly as possible. The wet fill is

Flexible pipes lead to and from the cyclones in which Mill tailings are concentrated before being used for underground fill.



Slag from the Copper Smelter being unloaded into the slag mixing station, where lower down it is mixed with mill tailings.



Mimag, October, 1958



Show Day

The 15th Annual Show organised by the Mount Isa Soaring Club was a successful and enjoyable occasion. A regular stall portraying photography, arts and handicrafts, and a stall of sweets, cakes, fruit and flowers for sale. The newest glider of the Mount Isa Soaring Club was also on display.

A dog parade, woodchopping, scout craft and other events were held. But laurels for the occasion must go to the every time marksmanship proved good enough. More than 80 duckings Lois was blue in the f





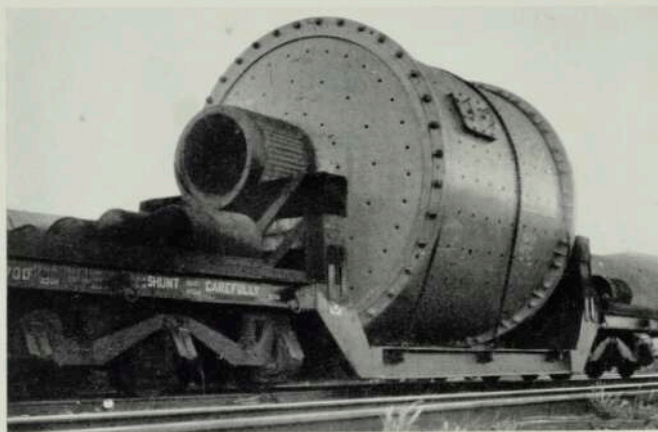
n and Frolic

of England at Kruttschnitt Oval last month was
ve crowd strolled leisurely through gaily decor-
andworked linen and offering a lavish selection
sows kept both children and adults amused.
display and an interesting miscellany of house-

to exhibits kept the lively programme moving,
dy of the Splasho, Miss Lois Sturzaker, who
or a splash into a tank of icy water. After
still smiling bravely. In all a good display.



≡ Plant Diary ≡



Photographed at Mount Isa on its arrival by rail from Townsville is this 29-ton Dominion type Ball Mill which was manufactured for M.I.M. Ltd. by A. Goninan & Co. Ltd., Newcastle, N.S.W.

Copper Smelter

Maintenance crews, particularly the bricklayers and boiler-makers, have completed several major repairs recently. Brickwork of both converters was such that it was decided to replace all brick in the vessels in preparation for the next eighteen months' smelting when lost time for maintenance must be reduced to the minimum to enable production schedules to be met. After this period new plant will largely take the place of present converters.

The reverberatory furnace is still smelting at a high rate for a furnace of its size, and it is to the credit of staff and operators in all sections that period blister production still tends to rise. Undoubtedly, the maintenance section must take some of the credit, too, as planned maintenance schedules are proving their worth.

The second 60-ton crane in the converter aisle has at last been commissioned and the "old Mimag, October, 1958

faithful" 40-ton crane has been pulled down. Operating practice in that section of the plant should be made much easier as the new crane is considerably faster than the one it replaced. Production for Period 2 was 2,765 tons of blister.

Engineering

Trunnions for the Phase III Ball Mills have been located,

and it won't be long before the mills are installed and running.

Foundations and floor for Phase II Rod Mill have been completed.

Preliminary drawing for Phase III 60-foot diameter copper thickeners are being prepared. These thickeners will be erected on the southern side of the mill in the position formerly occupied by the Mill office. An old landmark has disappeared with the dismantling of the zinc plant to make way for the new copper smelter stack.

At the north end of the power house a new turbo-blower is to be installed. It will deliver 30,000 cubic feet of air per minute at 14 pounds per square inch to the enlarged copper smelter.

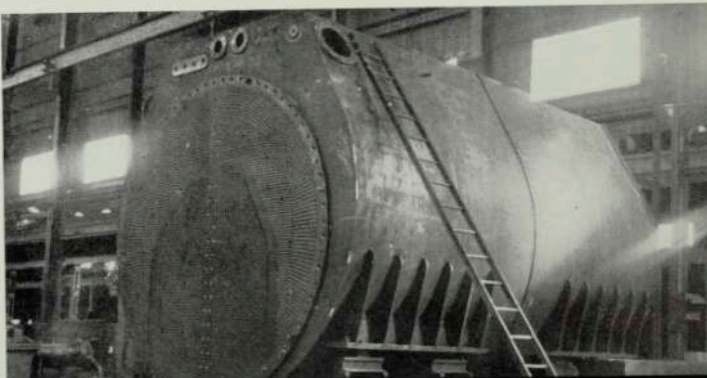
Lead Smelter

There has been a number of changes in the maintenance gangs during the month. We lost Stan Koitka to Construction and Tiny Love has been promoted to foreman.

Don Irwin previously carrying both Smelters on his broad shoulders, can now concentrate on Copper alone, while newcomer Bob Bishop will look after the Lead Smelter's electrical troubles. Formerly a Construction man, Bob intends to combine golf with electricity if he has any spare time.

Lead produced last period was 4,300 tons.

The condenser for the 30 m.v. turbo-alternator set. This photo was taken during a recent inspection of the unit at Thompsons Works, Castlemaine, by B.G.E. and M.I.M. representatives.



Visiting **PERSONALITIES**

PROFESSOR D. M. MYERS

A recent guest of local members of The Institution of Engineers, Australia, Professor D. M. Myers is Dean of the Faculty of Engineering at the University of Sydney.

A dinner held in his honour at the Mount Isa Hotel was attended by members of the Institution and official guests. During the evening Professor Myers gave a general talk reviewing developments in some of the more progressive fields of Science and Engineering. He also discussed changes likely to take place in the activities and responsibilities of engineers and adaption that may be necessitated in this changing age of nuclear power and high-speed flight.



MISS MARIE BANN

LAST month Mount Isa was visited by a Sydney girl, Miss Marie Bann, who was born here 19 years ago.

Miss Bann, who lives with her parents at Dee Why, New South Wales, is a student teacher at Armidale Teachers' College. She is interested in swimming and photography and is a keen bird fancier. While on this visit to her god-parents, George and Ruby Davis, she took the opportunity to visit Mary Kathleen.

Miss Bann was particularly impressed by Mount Isa, and by the magnitude of the plant and machinery, which exceeded all her expectations.

After a three-week sojourn here she returned to Sydney.



MR. ANGUS McLELLAN

MANAGER and Director of Intercolonial Boring Co. Ltd. Mr. Angus McLellan visited Mount Isa recently. Mr. McLellan is a Queenslander and has been with I.B.C. since he started as a junior in the Engineering Department in 1936.

Mr. McLellan recalled that his firm had been dealing with Mount Isa Mines Limited for as long as he could remember, and he personally has been coming to Mount Isa on and off for twelve years.

Concerning Mount Isa he had this to say, "It is amazing to see the great success this major undertaking has achieved and surely its economic importance to the Commonwealth must be something quite beyond what was ever imagined.

"In almost every conversation one hears of future development of present and untapped sources of minerals. This is particularly refreshing and encouraging in to-day's world."



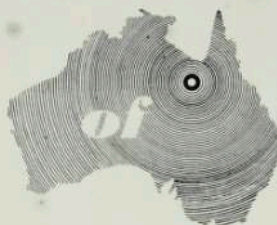


A NIGHT IN PARI





Men of Isa



ALAN BRADSHAW, manager of the Mount Isa Branch, Australian and New Zealand Bank Ltd., is a Queenslander from the Ipswich district.

Alan has been 22 years in the service of the bank and has been manager at Mount Isa for the past two years. Previously he served at Dalby, Townsville, Toowoomba, Rockhampton and Brisbane.

Alan Bradshaw



Joining the A.I.F. in 1940, Alan attended the Officers' Training School at Randwick, and was commissioned in 1941. He served as a lieutenant with the 9th Division in New Guinea and Borneo.

Married, with two children, he likes to spend much of his time gardening. He is a member of the Board of Control, Leichhardt Dam Recreation area.

Alan said he considered himself fortunate in being posted to

Mount Isa. He has seen the bank staff more than doubled in the past two years because of the town's development, and the bank had every confidence in the continued growth of Mount Isa.

FRANK BORN. A native of the Frankfurt district of Western Germany, Frank Born arrived in Australia in January, 1954, and joined M.I.M. Ltd. 14

Frank Born



months later.

As a child he visited South America, where he stayed with relatives on a cotton farm near Buenos Aires.

Although by trade a butcher and smallgoodsman, Frank worked as a coalminer in the Essen district at the Kaiser Wilhelm Mine. He also did two years' labour service with the American Army as a cook.

Frank went through the Mining School at Mount Isa and has

been mining underground ever since he joined the Company. At present he is mining copper oxide on 4 Level—the only underground mining of copper oxide in progress at the moment, he told Mimag.

Mount Isa, Frank believes, is the best town in Australia. Previously he worked at Bonegilla migrant camp as a cook and subsequently was a crane driver in Cairns with A.C.F.

He is married to a Dutch girl and they have one daughter. He is bringing his mother to Australia in November (he lost his father in the war), but whether she stays or not is "up to her," Frank says.

JACOB REINDL, who hails from Tyrol in the Bavarian Alps, came to Australia in the same

Jacob Reindl



ship as Frank Born in 1954. A wheelwright by trade, he worked first at Sydney, then later at the blast furnaces in Port Kembla, N.S.W.

Subsequently he came north to Queensland and spent a while canecutting near Cairns.

He arrived in Mount Isa over two years ago and is employed as a miner on 4 Level.

Jacob is single. He enjoys hunting and shooting in the bush. At home he was fond of skiing in

the mountains of South Germany, but there is no opportunity for skiing in Queensland.

He likes Mount Isa and intends to remain here.

JOE CSONKA. One of the longest established new Australians in Mount Isa, Hungarian Joe Csonka came here in January, 1950.

He was a sergeant of the Gendarme in Tatabanya, the largest coal mining town in Europe, lying 50 kilometres west of Budapest, but escaped from Hungary shortly after the Communist take-over in 1948.

In the French Occupation Zone of Austria he joined the French International Police. Exactly one year later he left for Australia.

Joe went to a migrant centre in Bathurst, N.S.W. A month later, he told Mimag, Mr. Stuart

present he is working in the main drive, contract 758.

Joe is a keen soccer enthusiast and a foundation member of the Pannonia Soccer Club. He is also one of Mount Isa's best table tennis players.

At 46 Joe looks a young 36. Married with two daughters 14 and 10 years old, his family is stranded behind the iron curtain. But he still entertains hopes of their getting out and joining him here in Australia.

MELVIN GAMER: Born in Mount Isa 17 years ago, Mel Gamer is an apprentice carpenter employed with Community. His father is a shift boss underground.

Mel is a past pupil of the Mines and High Schools and joined the Company in December, 1955. Attached to the Carpenter's Shop, he previously

some remarkable tunnelling in the construction of the new Tailings Dam.

In 1935 Paddy joined the Irish Free State Army and for a few years was a member of the Presidential Horseguard. Shortly after the outbreak of World War II he went to London and after the war, when most men tended to settle down, Paddy found himself still with a hankering for travel. He joined an oil company in London, spent a few years in North Africa on oil exploration, and went to Kuwait on the Persian Gulf where he worked for two years as an overseer. Kuwait is one of the hottest spots on earth and today Paddy thinks little of the summer heat at Mount Isa.

He came to Australia almost seven years ago and six months after his arrival in this country



Joe Csonka

Tuck and Mr. Wally Onton arrived at the centre and employed 16 men for M.I.M. Ltd., nine of whom were Hungarians. He was one of them.

Joe has always worked as a miner since he joined the Company and indeed has established himself as one of the Company's best miners. He worked with several record-breaking teams, including J52 of last year. At



Melvin Gamer

spent six months with construction at the Mill.

A keen hockey player, Mel plays with Pirates. He is also interested in football and swimming.

PADDY McMURROUGH. An Irishman with a chequered career is Kilkenny-born Paddy McMurrough who, with Australian, Bill Lester, recently did



Paddy McMurrough

joined M.I.M. Ltd. Since then he has worked practically all the time as a miner on 9, 7 and 8 Levels.

The recent tunnelling record which he shared with Bill Lester achieved an advance of 67 feet in a fortnight along a tunnel beginning 450 feet from the entrance. All the burden was removed by wheelbarrow.

Social angles

Administration

A hearty welcome back to "Mimag's" former General Office correspondent, Kev. Maguire, who has returned after a six months sojourn in New Guinea. Kev. is now "hibernating" in the Time Office!

Carol Lovett of the Stores Section is back from holidays in Brisbane. Also back are Fred and Erica Morel. Water skiing on Lake Barrine seemed to be the highlight of their holiday touring the Tablelands.

Anyone requiring lessons in jew fishing should ask Clarrie Newson about one he did not let get away at Karumba recently. Weighing 96 lbs., Clarrie's catch was a near Australian record.

Engineering

Like a "before and after" advertisement in a magazine was Bill Temple's transformation when he returned from his Karumba holiday. However, he is slipping back into his bad habits again.

The Drawing Office is changing shape as a result of George

Mrs. Joan Coleman is presented with a first-aid kit by Dr. Phibbs. Mrs. Coleman had the highest certificate pass in the last examinations for the St. John Ambulance certificates. A native of Cairns she came with her husband to Mount Isa 8 years ago. They have four children and Mrs. Coleman says her first-aid kit will probably be very useful in the home.



Cook's power-crazed territorial ambitions. Newcomers to the office this month are Mechanical Engineers Ralph Fitzgerald and Bob Challin, Electrical Engineers Bob Biggs and Gordon Garraway, while Doug Nicholson is having his second term in the Drawing Office.

Football

Warehouse v. Admin.

With a favourable referee plus the assistance of a good breeze, Warehouse Football Team failed to stem the rushing tide of Admin's Team in the recent "Knock-out" Cup played at Wellington Oval.

Brilliant passing rushes plus scintillating handling paved the way for Admin's win. Special mention must go to Barry Hunter for his devastating tackling, and "Tiger" Scott for his fiery rucking.

Warehouse showed subtle tactics early in the game and looked to have control of the issue at the half-time whistle, but their evasive strategy failed thereafter.

The auditors were in.

"Hard-rock" Ockerby (Don't rock the Ock!) checked numerous promising movements, whilst another procrastinating swine, Hogg, double-checked them. George Beard showed versatility in playing wing, front-row and five-eighth almost simultaneously. Flint also showed fire.

Warehouse played well in patches, and at times were unlucky not to score. George McGregor lost his tweeds soon after the start, and was out of the game for a few minutes. Darby Davis' blinding speed left the big crowd gasping. Bob Parkes did the work of 4 men . . . literally! He was well supported by Dashing Dick Dods-worth. Their crashing tackles and barging runs took a heavy toll.

A fine try by "Bodgie" Williams for Admin. earned the crowd's appreciation and the winning team was ably led by Ted Goulevitch.

Happily, there were no serious casualties in the match, although it is reported that one spectator, "Tosser" Crowe, nearly died . . . laughing!

The Warehouse Staff heartily congratulates the Admin. on their splendid victory and are looking forward to a cricket clash in the near future.

Lead Smelter

Doug Moyses returned from Adelaide where he met Des White, another of our holidaying metallurgists. Jimmy Tur-

continued on page 22



SPORTING ROUND-UP

Hockey

The Hockey season just completed was a very successful one and marked the introduction of yet another sport to the sport-minded Mount Isa community.

Six men's teams took part in competition throughout the year with Pirates, Tigers, Bantams and Mary Kathleen reaching the semi-finals. In a very even final Pirates defeated the High School Bantams 1-0, after 20 minutes extra play had been ordered. The standard of play in this game was a credit to all concerned and augurs well for future of hockey in the Mount Isa district.

During the year four women's teams also took part in fixtures. The four teams, Rocs, Pirates, High School and Tigers, played off in the semi-finals, with Rocs defeating Pirates 2-1 in the final. Mary Kathleen also fielded a women's team, but because of transport difficulties they did not play in the weekly competition.

Golf

Golfers at Mount Isa had only partly recovered from the shock of losing John Redpath when they received news that the Annans were leaving for Ayr at very short notice.

A send-off was arranged within 2 days which was possibly one of the Golf Club's most successful functions. Keith and Edna were made suitable presentations as a result of the combined efforts of both Members and Associates.

Keith (Bluey) Annan put

School Sports were in vogue last month at Kruttschnitt Oval. Top: The 4 x 100 yards relay in progress during the High School House Sports on Wednesday, September 10. On the following Friday the State Primary Schools occupied the oval and here we see a "tunnel ball" game in progress.

something into golf in Mount Isa which will be remembered for all time. He was a good golfer, better than most, but his fighting spirit in match play was an example that any player could endeavour to follow with profit. He "locked horns" with every golfer of note during the past eight years, but his tussles with Jimmy Sexton were in the nature of an epic, and will be discussed among golfers generally for many a year to come.

Edna, while not in the same class as her husband, did not rely on reflected glory to be considered a good golfer. She made great progress within the last two seasons, reducing her handi-

cap by a considerable margin and winning more than her share of trophies.

Ayr Golf Club is to be congratulated for gaining two golfers of such calibre.

High School Sports Day

Leichhardt House won the inter-house athletic competition for the fourth successive year with a total of 437 points; Kennedy was second with 352, and Gregory next with 254 points.

Individual results in championship events were: Girls, Open, Lorraine Matthews; Junior, Pearl White; sub-Junior, Evelyn Escuder. Boys, Open, Rodney Looper; Junior, Jim Cameron; sub-Junior, Trevor Barnes.

Teams events were a feature of the day's sports. The students beat the teachers in the relay—but for a dropped baton by the teachers the result might have been different.

Fred Leon won a good double,



taking the open 440 and 880 yards events, and Bill Kyte won the mile. The Kruttschnitt Shield will be presented on Speech Night.

Inter-School (Primary) Sports Day

The Mount Isa Mines Limited Athletic Shield was won by Isa Mines School with 118 points. Town School were runners-up with 112, and Convent next with 79 points.

The Shield was received by Mines School pupils, Annika Puusaari and Peter Hood, from Mr. J. W. Foots, General Manager of M.I.M.

The Mount Isa Silver Band led the procession of the schools' athletes through the town to the oval.

Australian Rules

At the Presentation Night, Mr. J. Debenham, Association Patron, was introduced by the president, Mr. L. Sweet, and presented the season's trophies. Mr. Des Negri, captain and coach of Australs, received the Mount Isa Mines Premiership Shield.

Barry Grimley won the award for the best and fairest player, and Ron Carlyon won the trophy for the most goals kicked.

Chess

The B.S.D. Recreation Club sponsored its Club Chess Champion, M. Lupulescu, to compete in the Queensland Chess Championships in Brisbane.

Lupulescu, only 27 years of age, fought out the final with V. Lapin, another young player 20 years of age.

Soccer

Scotties won the Wellington Shield by defeating Irish easily 4 goals to 1, and so had a straight five games victory in this round.

The Scotties' team work was a feature of their wins. They will now be favourites for the last round of fixtures, the Scottish Cup.

In the first round of games for the Scottish Cup, Scotties and St. Helens played one of the best games of soccer seen in Mount Isa.

SOCIAL ANGLES

continued from page 20

ner sold what would certainly be the best second-hand car in Mount Isa and bought himself an all-Australian job.

New foreman in the D. & L. plant is Lionel Mendez, and Beau Foots is on leave from the furnace.

Greek Priest Here

A recent visitor to Mount Isa was Father E. Zographakis of the Greek Orthodox Church, who visited the Greek Community last month.

Ten years in Australia, Father Zographakis comes from Limassol in Cyprus. He is Parish Priest at St. Theodore's Church, Townsville. This was his first visit to Mount Isa. The town, he said, looked very impressive rising out of the plain at night. It was much more extensive than he had anticipated.

The Stork Club

- | | |
|--|-------------------------|
| Mr. and Mrs. Crosbie, August 19, | a girl, 5 lbs. 9 ozs. |
| Mr. and Mrs. Whitehead, August 30, | a girl, 8 lbs. 14½ ozs. |
| Mr. and Mrs. F. Doherty, September 2, | a boy, 8 lbs. 12 ozs. |
| Mr. and Mrs. Bray, September 6, | a boy, 7 lbs. 7½ ozs. |
| Mr. and Mrs. Brehmer, September 9, | a boy, 6 lbs. 5 ozs. |
| Mr. and Mrs. Stevenson, September 10, | a boy, 9 lbs. 5 ozs. |
| Mr. and Mrs. Jessop, September 12, | a boy, 7 lbs. 7 ozs. |
| Mr. and Mrs. Moran, September 12, | a boy, 6 lbs. 9½ ozs. |
| Mr. and Mrs. Catsacos, September 12, | a girl, 9 lbs. 1 oz. |
| Mr. and Mrs. Hodgetts, September 14, | a boy, 8 lbs. 12 ozs. |
| Mr. and Mrs. Mhoulouzarides, September 20, | a boy, 7 lbs. 11 ozs. |

Seen here are some of Mobilgas Trial cars checking in at the Mount Isa Control Point last month. Top is the ultimate winner, Perkins' Volkswagen. Next a car that attracted much interest, the little Japanese Datsun. This car was winner of its class. The third car is the new Czechoslovakian Skoda 440, driven by Major Warwick, who was twice winner of his class in Redex Trials with Skodas. At bottom is a much battered Zephyr which overturned on the trip from Darwin, but continued in the trial.





Safety Glasses Paid Here

Ask fork lift driver Allan Wilburn (above) what he thinks about safety glasses. He will tell in his own words of a recent experience.

Allan's job is to pick up lead castings from their moulds and place them in railway trucks for transport.

On September 16 Alan was shifting one of these castings. He got off the fork lift to remove

an object that was blocking his path. As he was bending down one of the iron hook-wedges (above right) came loose, fell and hit his spectacles in the vicinity of the right eye.

The glass lens remained intact, but the frame buckled and one wing broke away.

Allan's sole injury was a slight laceration to the nose caused by the bridge of his glasses.

It is interesting to speculate what might have resulted had Allan been wearing ordinary glasses, or for that matter had he not been wearing glasses at all!

FIRE PRECAUTIONS IN RESIDENTIAL AREAS

A recent fire could have rendered 40 men without accommodation and caused the loss of all their personal belongings.

This fire was caused by the careless use of an immersion heater, which was being used to boil clothes by an employee of the Mines doing his weekly washing.

For many years, the use of immersion heaters and any form of home-made heating or cooking appliance has been prohibited in dormitories, barracks and residences connected to the Mount Isa Mines power supply, because the use of these unauthorised appliances is potentially dangerous.

The Mines Electrical Inspector makes regular inspections of all installations on the Mines Lease and for their own protection residents are advised to destroy all such contrivances.

New Advantages in Home Appliance Scheme

The deposits on refrigerators, washing machines, slow combustion stoves and electric stoves sold through the Home Appliance Scheme have been reduced from 20 per cent. to 10 per cent. The terms of repayment for these particular items have been increased to three years.

The table hereunder indicates the difference between purchasing one of these articles through the Home Appliance Scheme as opposed to purchasing the article through one of the Hire Purchase Organisations:—

	Cash price	Interest	Deposit	Repayments
Hire Purchase Organisations over 3 years	£200 0 0	£54 0 0	£20 0 0	£6 10 0 per cal. month
	110 0 0	30 12 0	11 0 0	3 12 0 " " "
Home Appliance over max. period of 3 years	200 0 0	4 3 0	24 3 0	3 0 0 per fortnight
	110 0 0	2 10 0	13 10 0	1 10 0 " " "

N.B.: The Home Appliance Scheme works to the nearest 10/- when calculating the fortnightly repayment.

It is not difficult to see the tremendous advantage of purchasing through the Home Appliance Scheme.

Recently a Sickness and Accident Insurance Scheme was put into operation which, on payment of 1 per cent. of the balance owing after payment of deposit, entitles the purchaser after being absent from work for a period in excess of two weeks, to have all payments made on his behalf, provided the absence is not due to injury suffered whilst riding a motor-bike, or playing football, etc. In the event of death by accident the debt is absolved.

